

Open for Exploration™

San Mateo County Libraries Lookmobile

October 11, 2017

smcl.org



San Mateo
County
Libraries



The Lookmobile is an interactive mobile library designed to activate outdoor spaces and increase hands-on learning opportunities.





CAMERA OBSCURA THE DARKENED ROOM



HAVE YOUR PORTS OF VIEW

When you visit other map rooms, the landscape is different.

To make a map right show all the parts, you need to look at it from the top, the bottom, the sides, the front, the back, and the inside.

When you look at the map, you see the world from the top. The map is a picture of the world, but you can't see the world from the inside.

When you look at the map, you see the world from the top. The map is a picture of the world, but you can't see the world from the inside.

**This unique library
experience promotes inquiry–
based learning and offers
visitors six core interactive
experiences:**



Humanities, Sensory, and Motor Map of the Brain (2012)
 Courtesy of Brain-Map



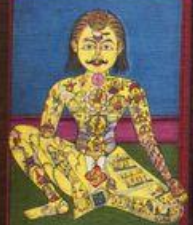
Recently Verified Butterfly and Moth Sightings
 (2016) by the Butterflies and Moths of North America (BAMONA) project
 Courtesy of BAMONA



San Francisco: Wild in the City (1992)
 by Nancy Morita
 Courtesy of Nancy Morita



Locals and Tourists in San Francisco (2011)
 by Eric Fischer
 Blue dots are places
 visited by both locals
 and tourists. Yellow dots
 are places visited
 only by tourists.
 Courtesy of Eric Fischer



Sapta Chakra (the seven chakras) (1899)
 unknown artist
 Courtesy of the British Library



Make a map of a place or a journey you know.

You might map:

- ▶ Your bedroom
- ▶ A trip to school, work, or a friend's house
- ▶ A real or imaginary place that inspires you
- ▶ Your school
- ▶ Your favorite bike ride or hiking trail

DRAWING FROM MEMORY

When you're finished with your map, take another look at it. Or better yet show it to someone else who knows that place. What parts did you draw accurately?

When drawing maps from memory, we all tend to make the same kinds of mistakes. For example, when we put two locations on the map, we tend to draw them too close together. Of course, some maps are more concerned with artistry than accuracy. And since it's your map, you should draw your house as big as you please.

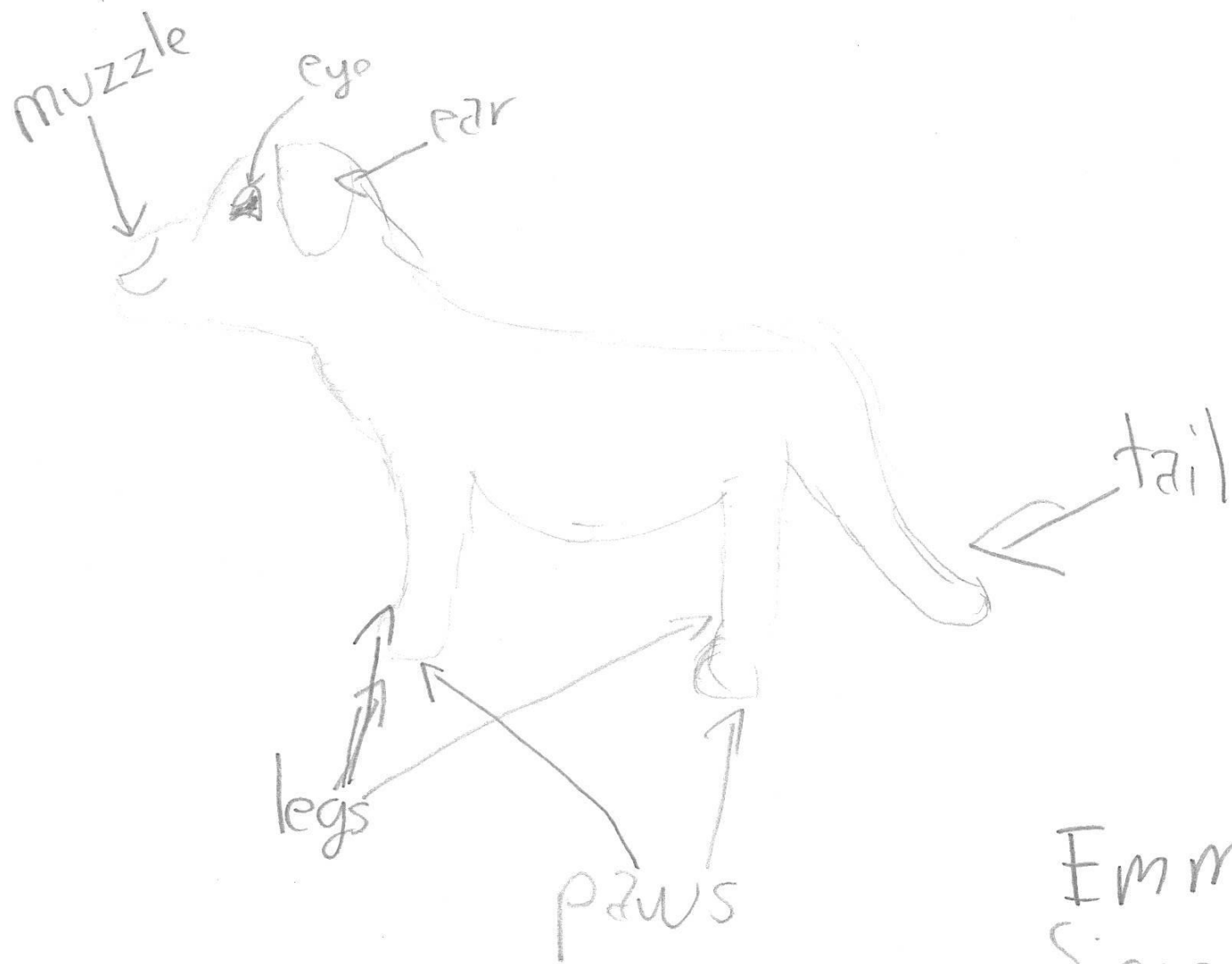


Can your friend draw you accurately?

- ▶ Stand near the window and put one hand on the glass.
- ▶ Your friend will trace your hand, arm, then your head, and maybe the rest of you, too.
- ▶ When your friend is done, move back about 10 feet and stand in the same pose. Your friend will trace you again.







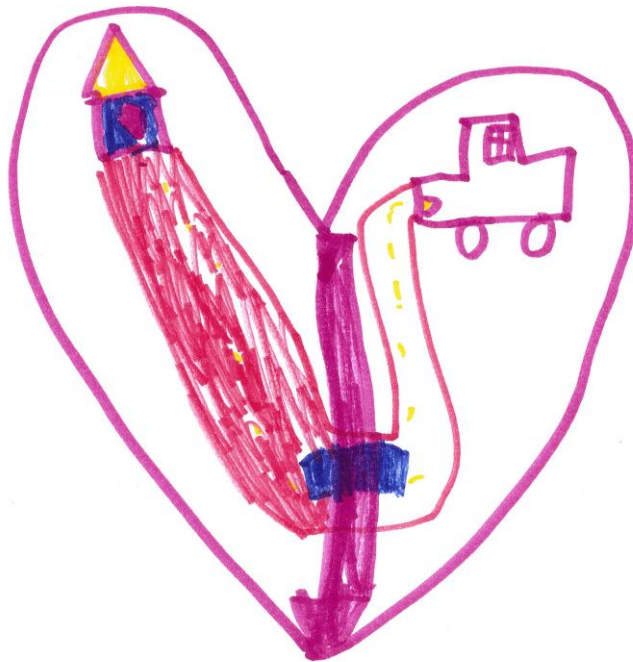
Emma
Sierra





San Mateo
County
Libraries

celena



LIKE THE BACK
OF MY HAND



San Mateo
County
Libraries

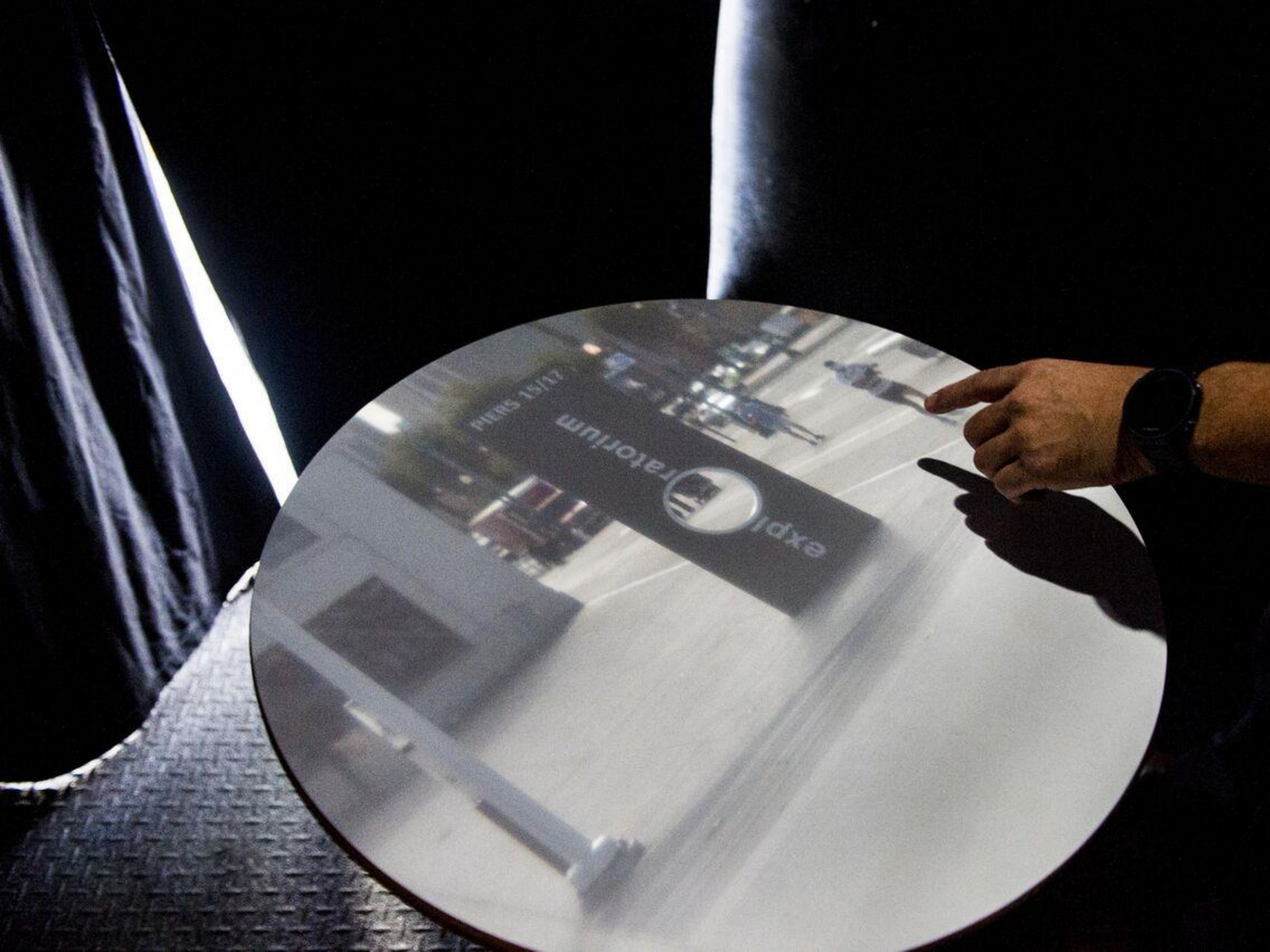
PIQUE













San Mateo
County
Libraries

The vision of San Mateo County Libraries is to ignite growth through transformative experiences.

The Lookmobile is supporting these experiences by activating outdoor spaces to encourage play, exploration, learning and community connections.







Mapping
San Mateo
County







NO DOGS ALLOWED
SCHOOL PROPERTY
PRIVATE PROPERTY
VIOLATORS WILL BE PROSECUTED
BY PENNSYLVANIA
LAW ENFORCEMENT

CAMERA OBSCURA

LOVE







"The Lookmobile is amazing – a fascinating, interactive museum on wheels, just waiting to be explored.

The future starts with knowledge, sharing and community. Come to your local library and experience the excitement."

– Lookmobile lover



Thank You!



San Mateo
County
Libraries





San Mateo
County
Libraries



San Mateo
County
Libraries



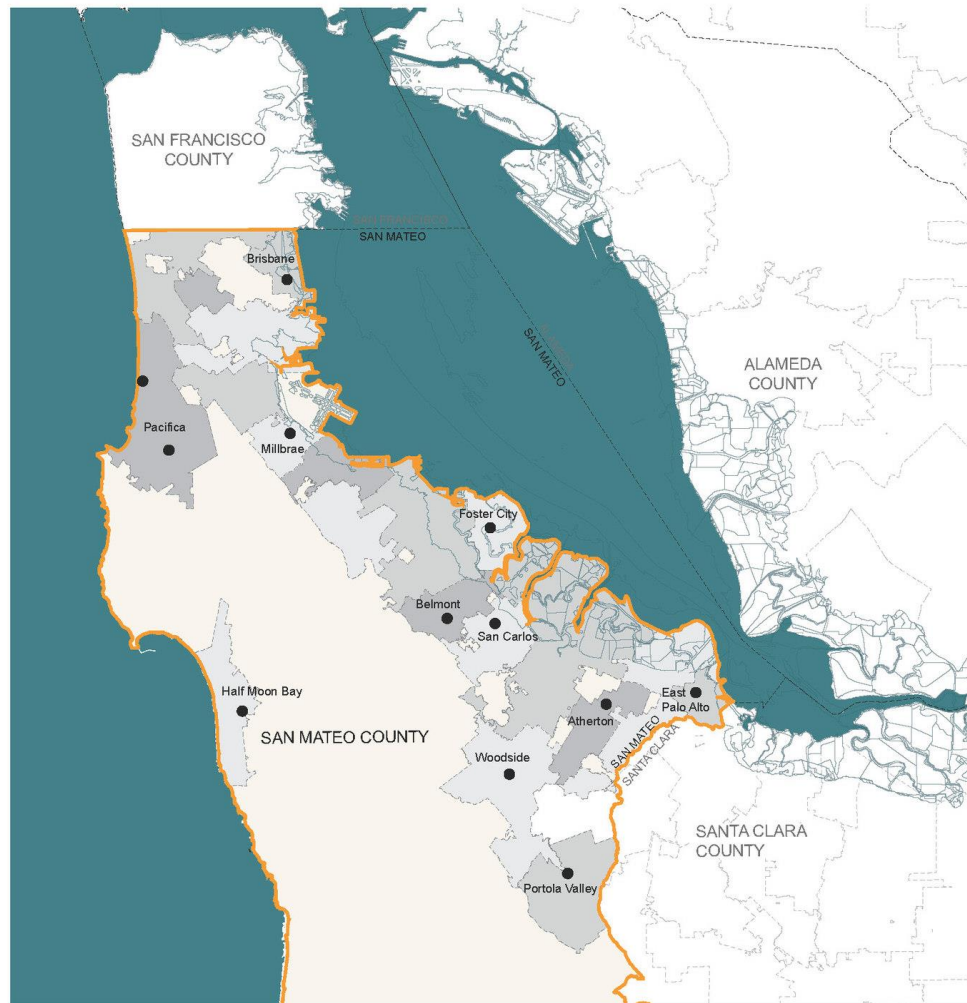
San Mateo
County
Libraries



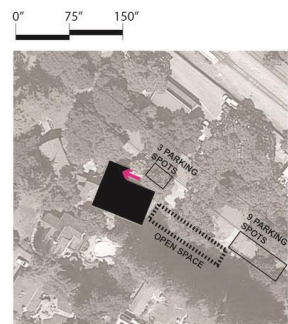
San Mateo
County
Libraries

REGION

San Mateo County Library Locations

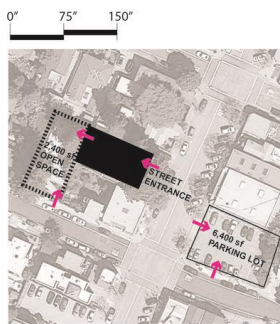


San Mateo
County
Libraries



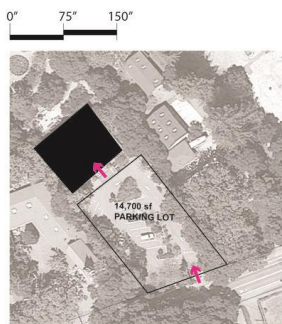
ATHERTON

adjacent street: quiet
parking lot: no
open space: yes, roadside



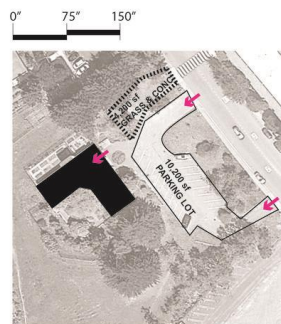
BRISBANE

adjacent street: main but quiet
parking lot: no
open space: yes, gated



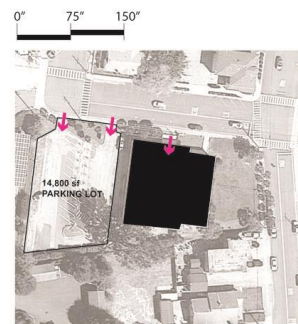
WOODSIDE

adjacent street: busy but far
parking lot: yes
open space: ?



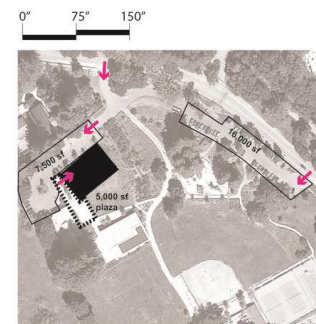
PACIFICA

adjacent street: busy but far
parking lot: yes
open space: yes, informal



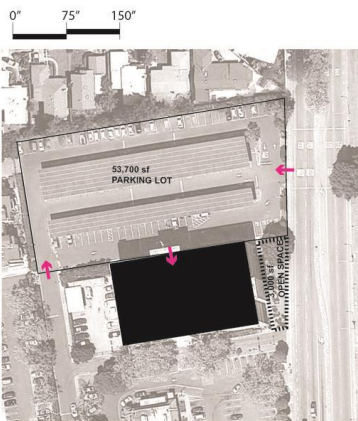
HALF MOON BAY

adjacent street: wide but quiet
parking lot: yes
open space: no



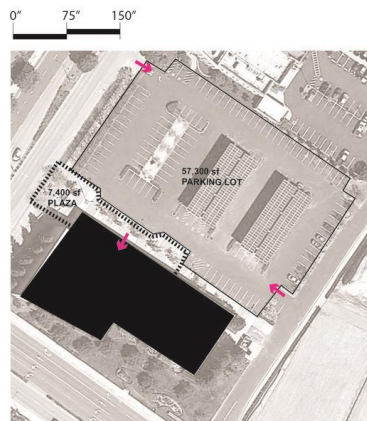
PORTOLA VALLEY

adjacent street: busy but far
parking lot: yes (2)
open space: yes, many



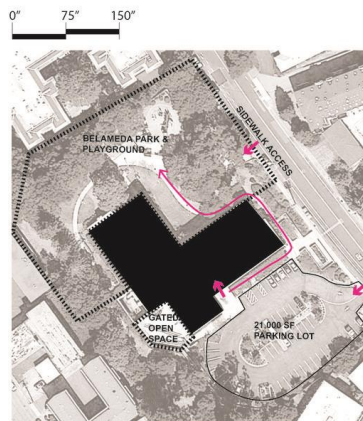
EAST PALO ALTO

adjacent street: busy
parking lot: yes
open space: yes, streetside & not accessible



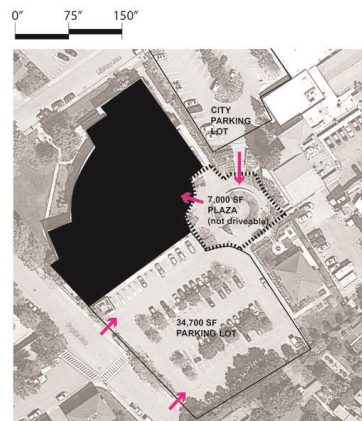
FOSTER CITY

adjacent street: busy
parking lot: yes
open space: yes, plaza



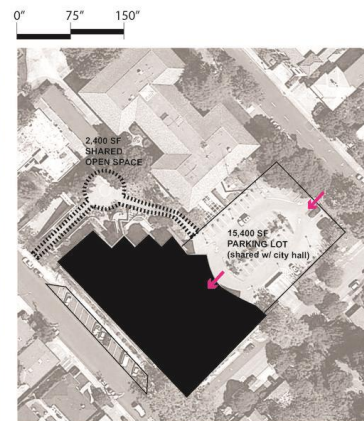
BELMONT

adjacent street: small but busy
parking lot: yes
open space: yes, public park & private space



MILLBRAE

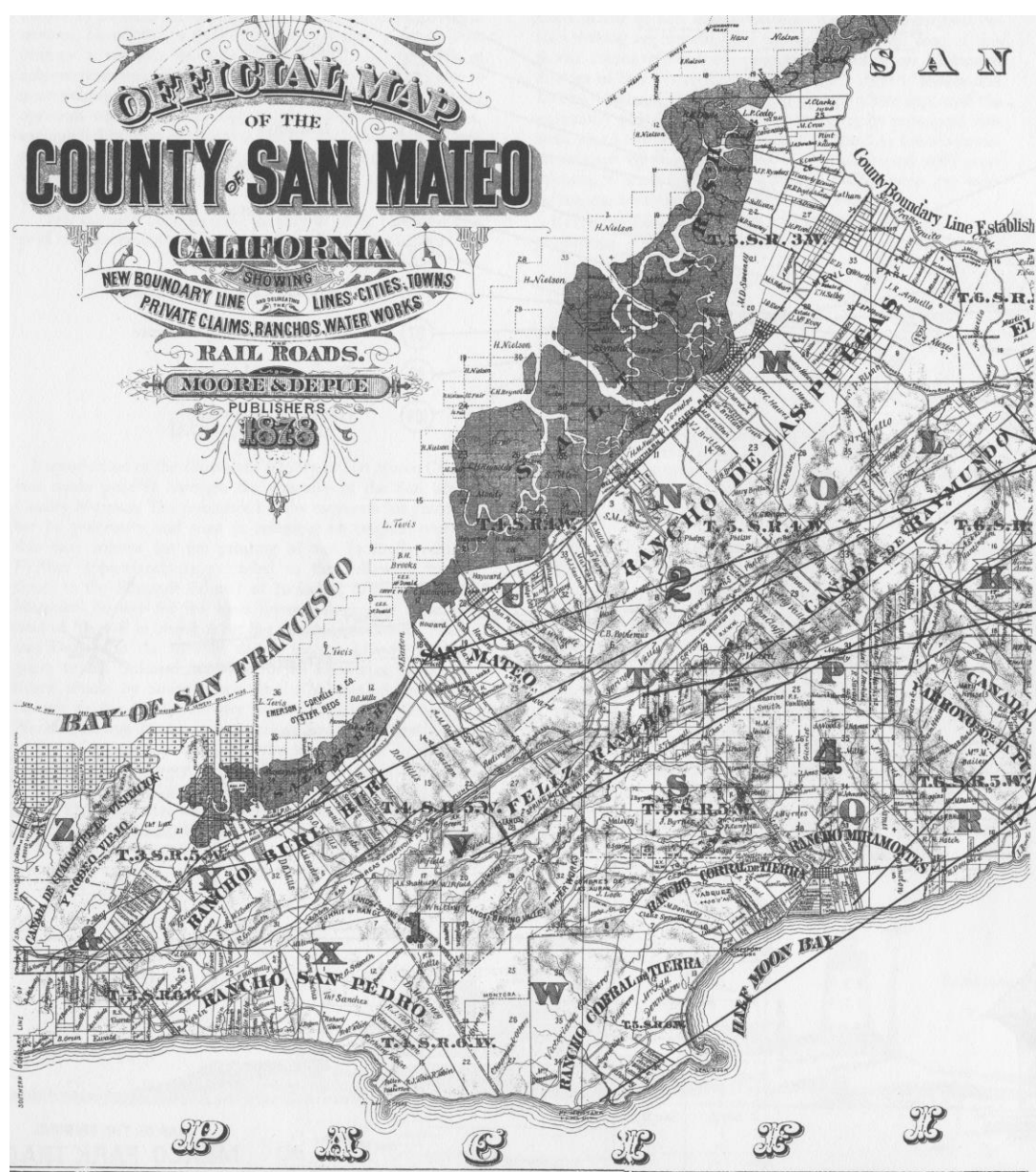
adjacent street: medium traffic and far
parking lot: yes (2)
open space: yes, plaza



SAN CARLOS

adjacent street: busy & small
parking lot: yes, & 2nd underground
open space: yes, shared





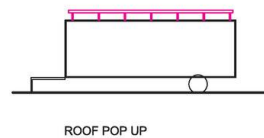
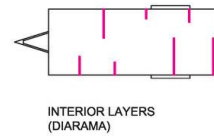
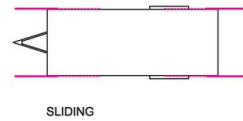
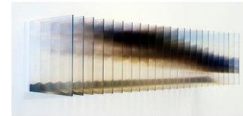
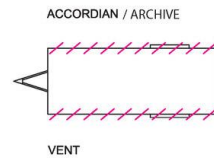
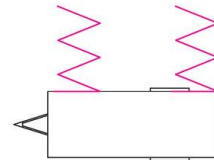
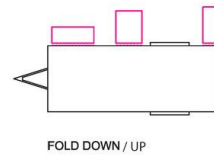
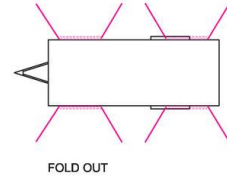
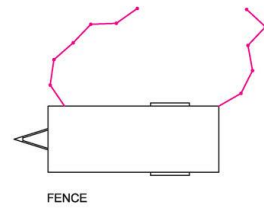
San Mateo
County
Libraries



San Mateo
County
Libraries



San Mateo
County
Libraries





PARALLEL

8'-6"

22'-0"

16' 20' 24'

PERPENDICULAR

18'-0"

25' to 29'

8'-6"

90°

16' 20' 24'

60 DEGREE

54'-0"

60°

9'-10"

8'-6"

16' 20' 24'

18'-0"

18'-0"



MAIN DOOR
ACCESS OVER
TONGUE?

LIFT-UP
AWNINGS

BENCHES?

RAMP GATE FOR
TRIKE + VISITOR

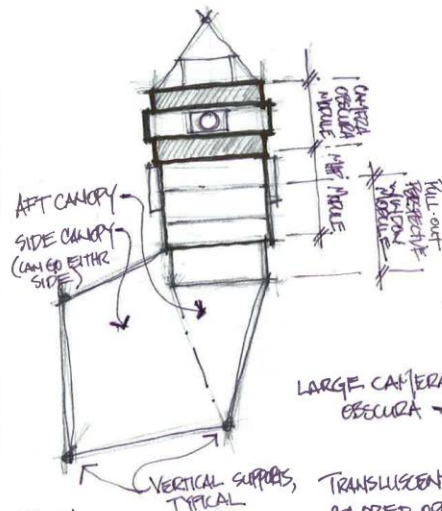
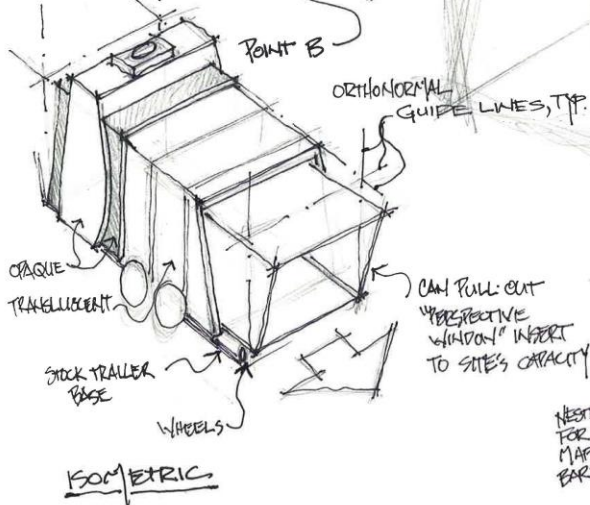
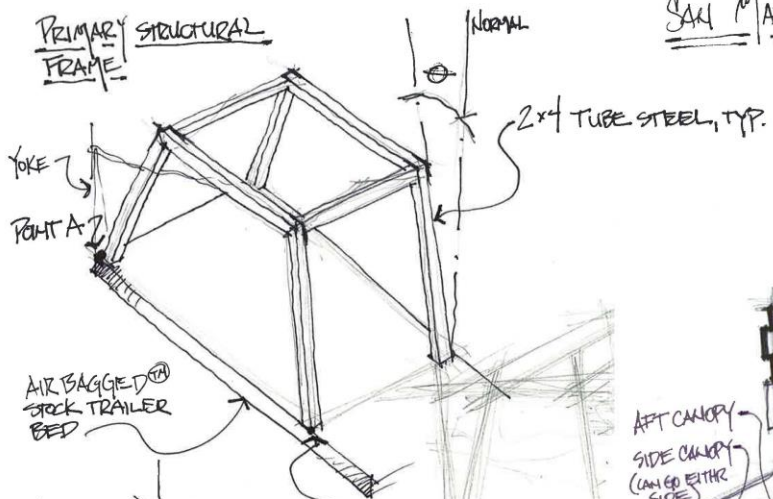
UTILITY TRAILER
BASE (20'?)



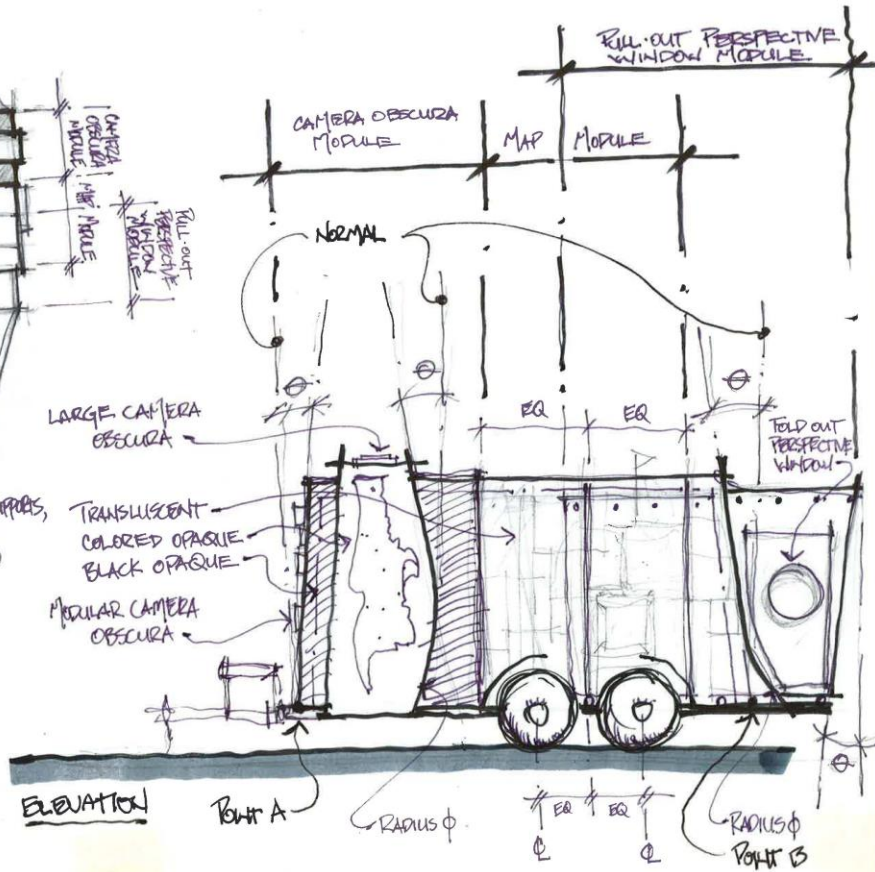
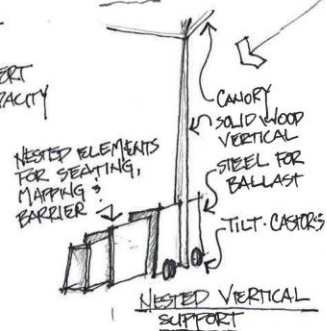
San Mateo
County
Libraries

SAN MATEO PRELIMINARY CONCEPT

JOSH 4.5.16



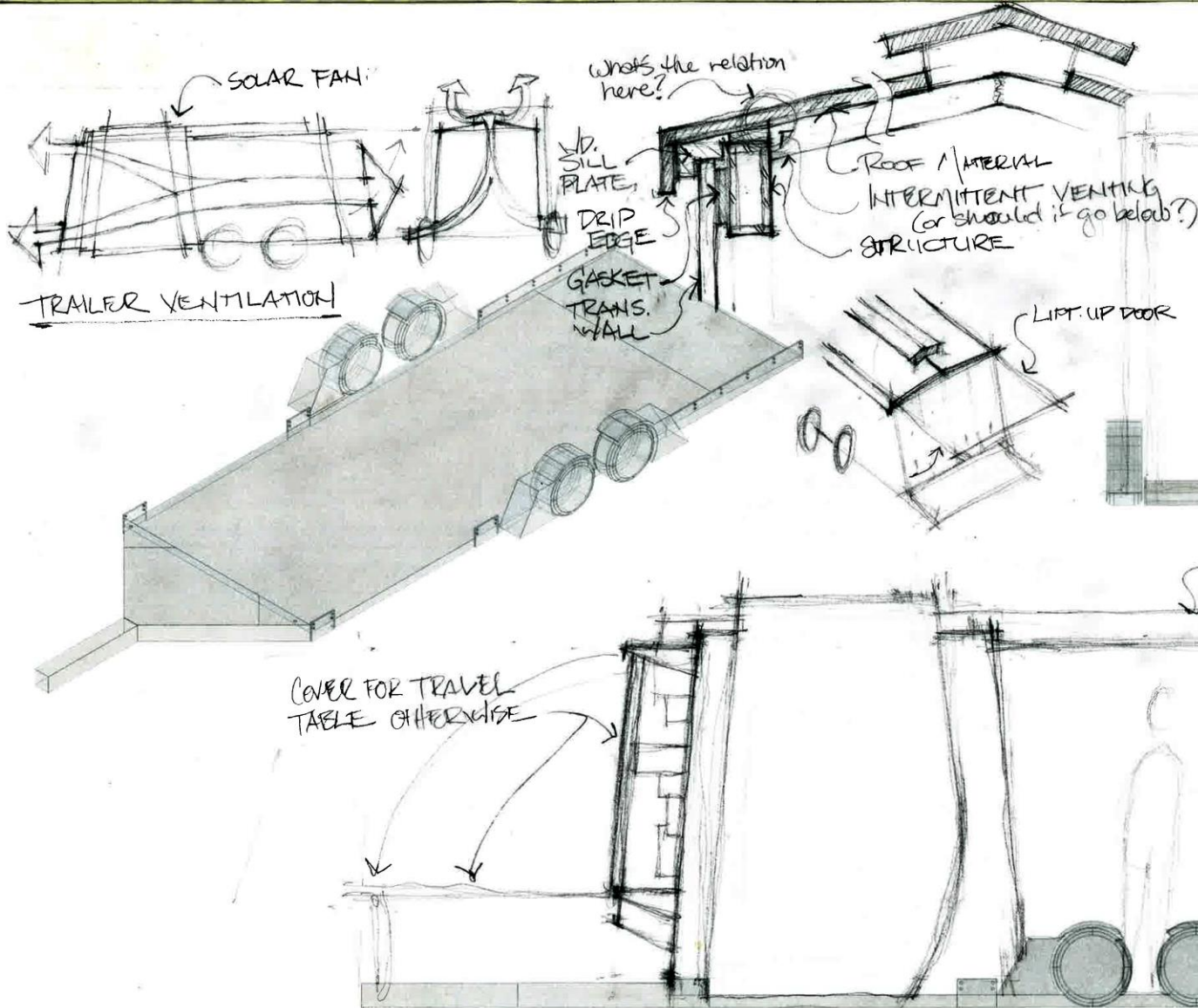
PLAN



ELEVATION



San Mateo
County
Libraries

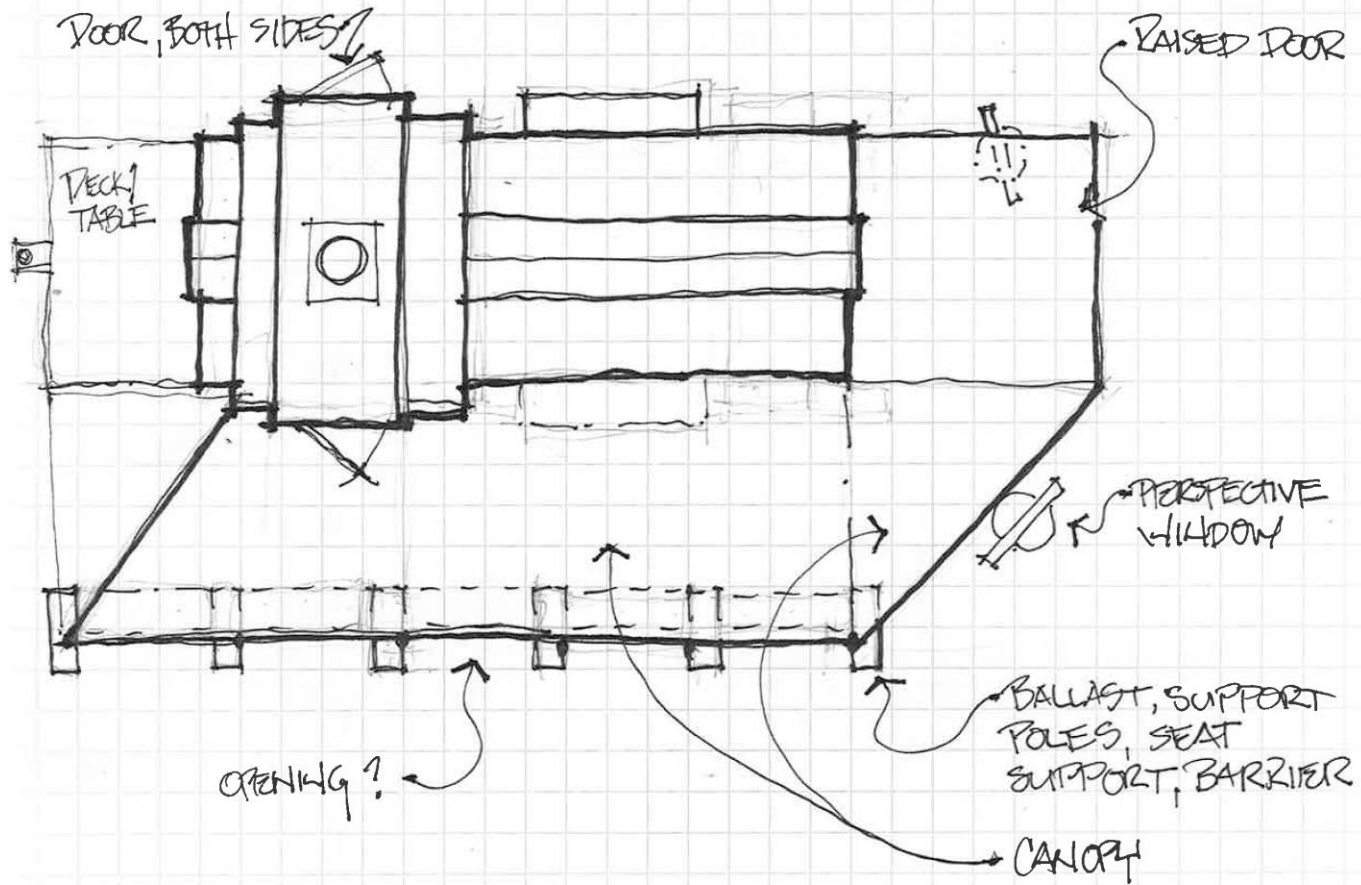


four by linkage.

- research camera obscures ventilation
- use case of setup/breakdown
- weight capacity → up to date model.
- wheel location

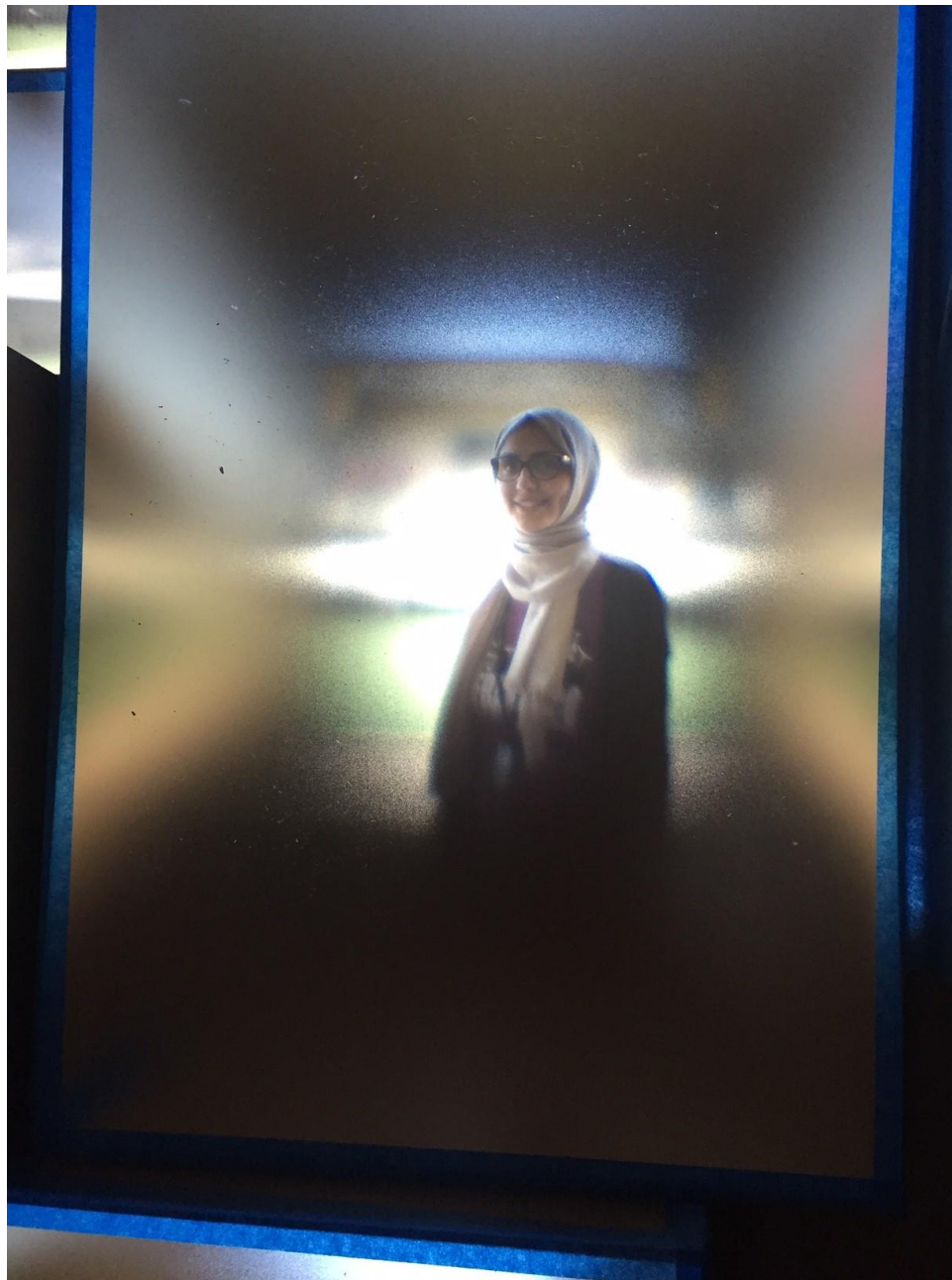
Essecomp
Conceptual Set 1d/hand sketch of use case
Model making stuff.



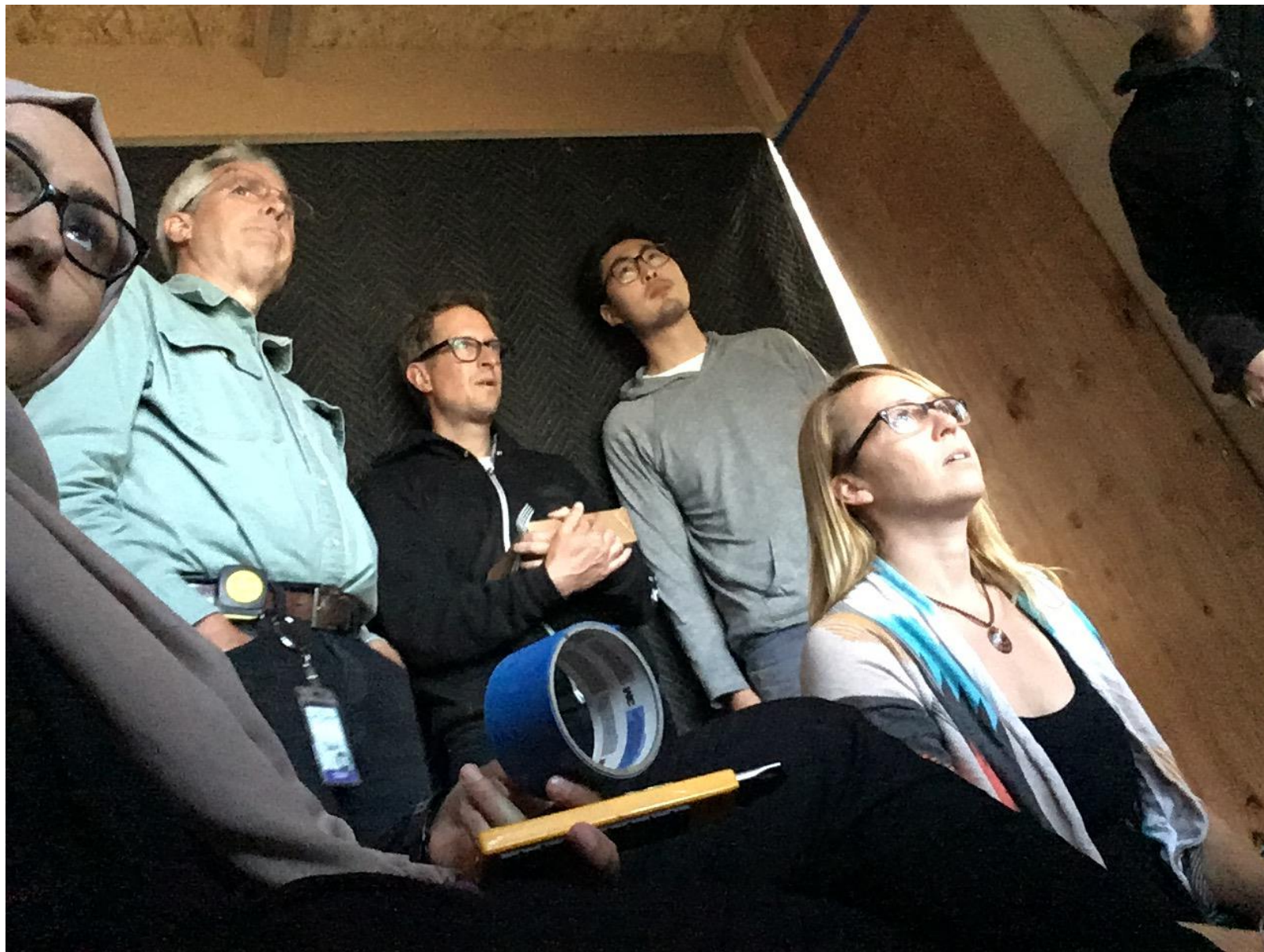




San Mateo
County
Libraries



San Mateo
County
Libraries



San Mateo
County
Libraries



San Mateo
County
Libraries



San Mateo
County
Libraries



San Mateo
County
Libraries



San Mateo
County
Libraries



San Mateo
County
Libraries

